


Features

- Size range is DN50-DN300
- Flanges to suit PN10 or ANSI 150
- On Request, ATEX 2014/34/EU Group II
- Face to Face as per EN558-1 series 20 / ISO 5752
- Temperature Range dependent on seat material
- Lever operated, Gearbox operated or actuated
- For Max Pressure, see pressure and temp charts
- Bi Directional design
- EU Manufactured

Materials	
Body	Nodular Iron
Disc	Stainless Steel
Seats	EPDM or NBR
Packing	Twinpack

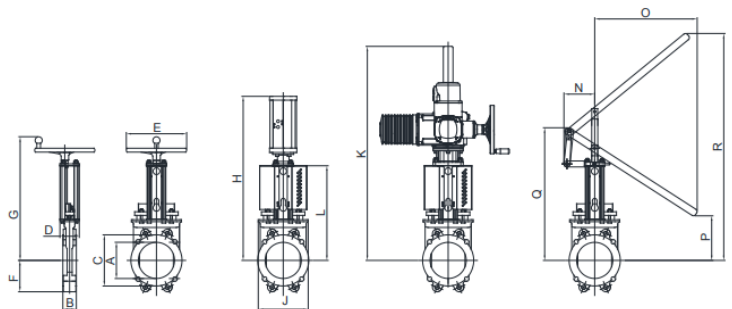
Manufacturer:



Stafsjö
SINCE 1666

Dimension Table

Size	A	B	C	D	E	F	G	H	J	K	L	N	O	P	Q	KG
2"	50	43	90	86	200	59	358	465	117	629	227	149	499	128	381	6.5
2 1/2"	65	46	105	86	200	66	382	490	131	654	252	147	492	153	407	8.0
3"	80	46	120	86	200	89	395	513	130	677	275	144	479	176	429	10.0
4"	100	52	144	86	200	101	430	548	151	712	310	146	635	17	472	12.5
5"	125	56	169	86	250	115	470	638	177	752	350	137	591	57	512	16.5
6"	150	56	192	86	250	130	514	727	201	794	392	129	554	99	554	19.5
8"	200	60	256	151	315	155	622	866	265	818	483	217	633	247	716	32.5
10"	250	68	307	151	315	193	718	1050	335	914	579	-	-	-	-	48.5
12"	300	78	354	151	315	228	822	1146	372	1059	675	-	-	-	-	66.0



Stafsjö's knife gate valve WB11 is bi-directional tight and has a cavity free full bore with superior flow characteristics. Integrated flange gaskets makes it easy to install. The valve is suitable for fluids, sludge and liquids with solids in suspensions such as water, waste water and bio mass.



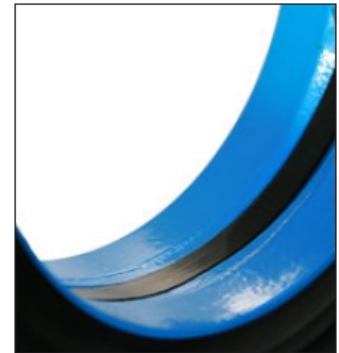
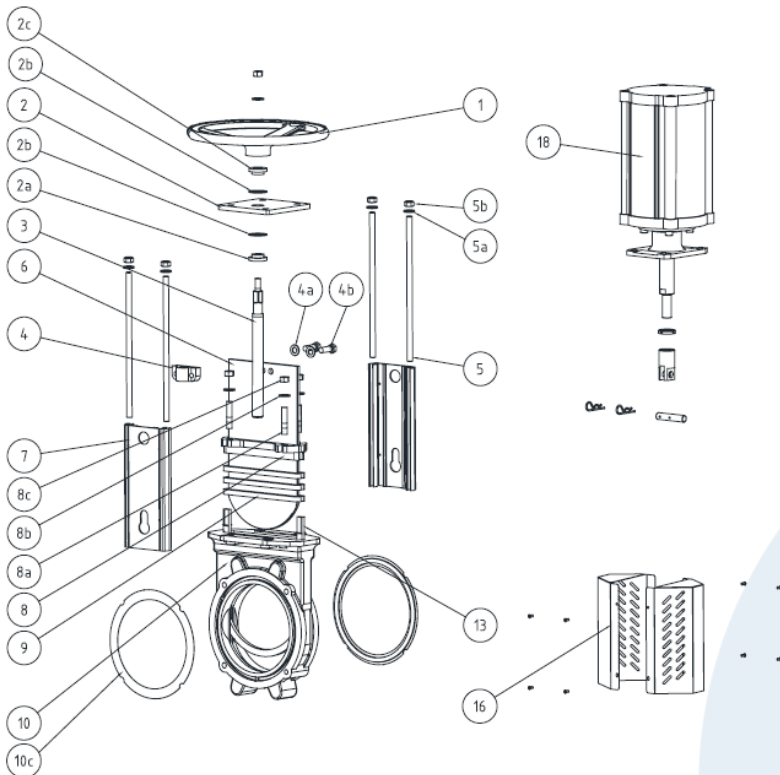
* For latest technical datasheet, scan QR code or visit allvalves.co.uk



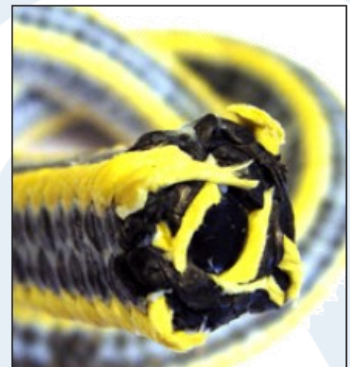
Materials of Construction:

Pos	Part	Material (Name)	Pos	Part	Material (Name)
1	Hand wheel	Coated cast iron Ø 200 - Ø 315 (EN-JL1040 (GG25))	8	Gland	Coated carbon steel (ASTM A216 (WCB)) or coated nodular iron (EN-JS1050 (GGG50))
2	Yoke	Coated steel (EN 1.0038)	8a	Stud bolt	Stainless steel (A2)
2a	Bearing	Brass (CuZn39Pb3)	8b	Washer	Stainless steel (A2)
2b	Slide washer	POM	8c	Nut	Stainless steel (A2)
2c	Bearing	Brass (CuZn39Pb3)	9 ⁶⁾	Box packing	See equipment D
3	Stem	Stainless steel (EN 1.4016)	9a ⁶⁾	Box bottom scraper	≥ DN 200 UHMWPE
4	Stem nut	Brass (CuZn39Pb3)	10	Valve Body	See equipment A
4a	Washer	Stainless steel (A2)	10c ⁶⁾	Flange sealing	Nitrile
4b	Bolt	Stainless steel (A2)	13 ⁶⁾	Sealing profile	See equipment C
5	Tie rod	Stainless steel (EN 1.4301)	16	Gate Guard not for HW	Coated steel (EN 1.0038)
5a	Washer	Stainless steel (A2)	18	Cylinder	See datasheet
5b	Nut	Stainless steel (A2)			
6	Gate	See equipment B			
7	Beam	Aluminium (EN AW-6063-T6)			

⁶⁾Recommended spare parts



Superior flow characteristics, with a cavity free bore with a seat inline with the bore ensure minimal pressure drop.



A gland box supplied with three layers of our TwinPack™, which is specially developed and made for Stafsjo's valves, secures that no media reaches the surrounding environment.

Stafsjo Part Numbering:

Double-acting pneumatic cylinder			Electric motor (AUMA multi-turn)		
DN valve	EC type	Force at 5 bar(kN)	DN valve	AUMA type	Attachment
50 - 125	EC 100	3,5	50 - 150	SA 07.2	F10/A
150	EC 125	5,5	200 - 250	SA 07.6	F10/A
200 - 300	EC 160	9,0	300	SA 10.2	F10/A

The table above gives recommended cylinder sizes at normal option with 5 bar air pressure. For other operating conditions, please contact Stafsjö or your local representative for advice.

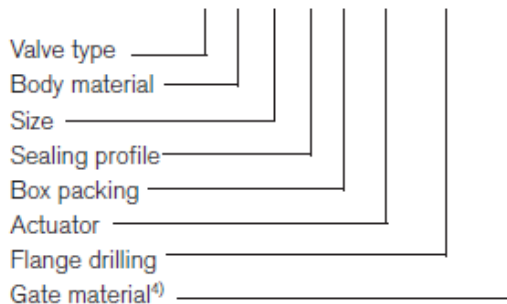
Electric motors are mounted according to standard ISO 5210. The table above gives recommended motor sizes at normal operation. For other operating conditions, please contact Stafsjö or your local representative for advice.

The actuators are described in separate data sheets. For advice and information on other actuators or on ATEX-classified ones, please contact Stafsjö or your local representative.

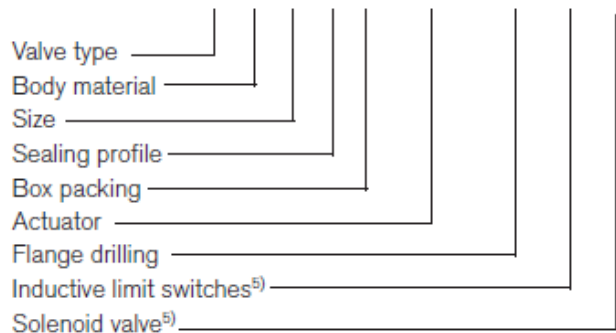
Specify the Stafsjö valve

Stafsjö's valves are modular designed and they can easily be customized with gate, sealing profile and box packings according to media and requirements, as well for actuators and accessories. Below are examples of how you can specify your Stafsjö valve. Further information is available on www.stafsjo.com.

WB11-L-200-E-TY-HW-PN10-1.4404



WB11-L-200-N-TY-EC160-PN10-ILS-SV



⁴⁾ Alloy specified if it differ from standard.

⁵⁾ All electronics must be specified in detail.



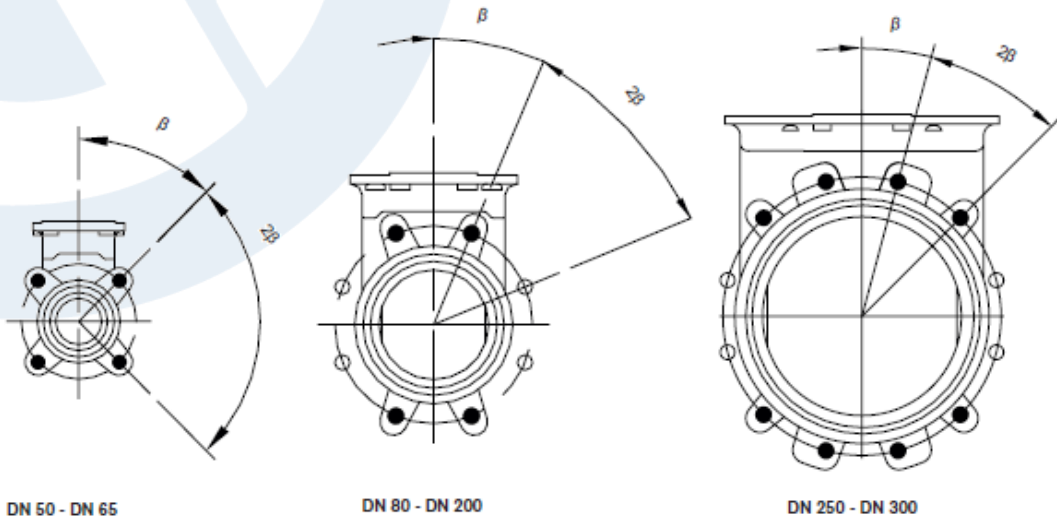
Knife gate valve WB11

The WB11 has a robust coated valve body in nodular iron. It is equipped with a gate in stainless steel, which has a polished edge in order to minimize friction and to lower required operation force. The valve is supplied with a steel reinforced sealing profile in Nitrile or EPDM. The gland box is equipped with Stafsjö's box packing TwinPack™ to secure that no media reaches the surrounding environment. The valve is modular designed and it can easily be supplied with different types of actuators and accessories. The WB11 valve is designed, manufactured, inspected and tested according to pressure equipment directive 2014/68/EU category I and II module A2. The valve is CE marked when it is applicable.

Other WB versions are the semi lugged WB available from DN 350 up to DN 1600 and the fully lugged WB14 available up to DN 600. For square flange connection we are able to supply WB11k with additional tapped holes for this or WB12 which has a square fully flanged valve body.



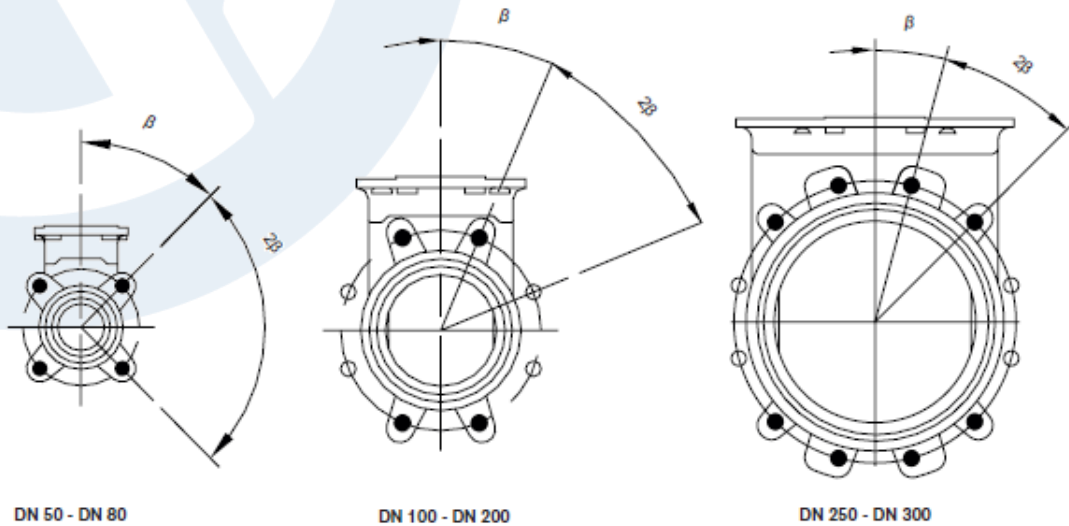
Flange Details EN 1092 PN10:



Flange drilling according to EN 1092 PN10

Flange drilling information (mm)									
DN	50	65	80	100	125	150	200	250	300
Outside flange diameter	165	185	200	220	250	285	340	395	445
Bolt circle diameter	125	145	160	180	210	240	295	350	400
Number of throughgoing bolts (○)	-	-	4	4	4	4	4	4	4
Number of tapped hole/side (●)	4	4	4	4	4	4	4	8	8
Bolt size	M16	M16	M16	M16	M16	M20	M20	M20	M20
β°	45	45	22,5	22,5	22,5	22,5	22,5	15	15
Screw lengths ^①	12	12	11	15	15	15	16	20	20

Flange Details ANSI / ASME:



Flange drilling according to ASME/ANSI B 16.5 Class 150

Flange drilling information (mm)									
DN	50	65	80	100	125	150	200	250	300
Outside flange diameter	152,4	177,8	190,5	228,6	254	279,4	342,9	406,4	482,6
Bolt circle diameter (mm)	120,6	139,7	152,4	190,5	215,9	241,3	298,4	361,9	431,8
Number of throughgoing bolts (◊)	-	-	-	4	4	4	4	4	4
Number of tapped hole/side (●)	4	4	4	4	4	4	4	8	8
Bolt size (UNC)	5/8-11	5/8-11	5/8-11	5/8-11	3/4-10	3/4-10	3/4-10	7/8-9	7/8-9
β°	45	45	45	22,5	22,5	22,5	22,5	15	15
Screw lengths ¹⁾	12	12	11	15	15	15	16	20	20

◊ Throughgoing holes

● Tapped holes

¹⁾Add the values with the thickness of the pipe flanges and the washers.



SCAN ME

* For latest technical datasheet, scan QR code or visit allvalves.co.uk

