

Series Features:

- Controls the speed of opening/closing of Pneumatic actuator
- Series 70094 is for use with Double Acting actuators
- Series 70095 is for use with Single Acting actuators
- Namur Mount
- Adjustable setting



Main Specification:

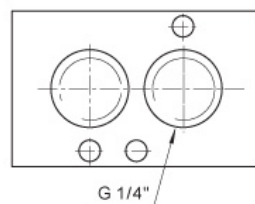
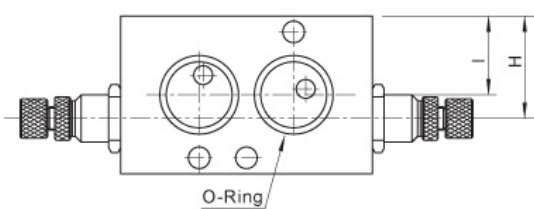
Feature:	Detail:
Max Air Flow	1400 L/Min @ 5 bar
Working Pressure	1.5 to 10 Bar
Temperature	-20C to +60C
Key Dimensions:	
Measurement:	Dimension mm
A Min (A Max)	25 x 32
L	64
D & F	40 (D) 20 (F)

Brand:

AVP

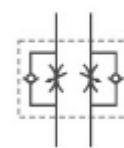
AVP pneumatic actuators are of the time proven rack and pinion design and with a hard anodised aluminium body, producing a rugged and reliable compressed air driven part turn valve actuator. Valve torques up to 13,000Nm are covered by 18 double acting AVP models and torques up to 4,100Nm by 16 single acting, spring return AVP models. AVP also offer a range of accessories including solenoids and switchboxes.

Dimensions and Wiring:

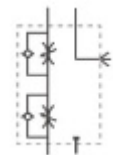


G1/4" Adaptor Plate for non NAMUR applications of Speed Reducer Valves

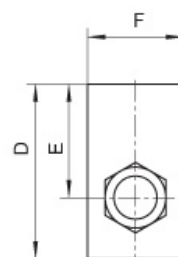
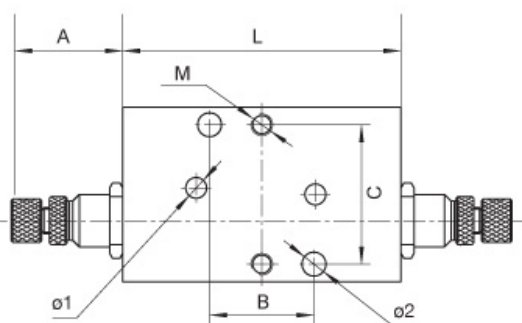
* Working Principles:



Double Acting



Single Acting



SCAN ME

