



Main Features:-

- ◆ PTFE-lined wafer type valve
- ◆ DN (40)50 - DN 300
- ◆ EN 558, ISO 5752, API 609
- ◆ Working Temperature -40 °C to + 200 °C
- ◆ Max Working Pressure max. 10 (16) bar

*Temperature and pressure determined by valve body, seat etc.



SERIES: T214-A

MANUFACTURER: **EBRO ARMATUREN**

Suitable Applications & Approvals:



HVAC



OIL



HVAC



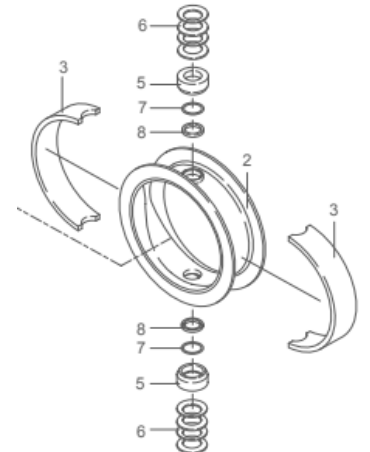
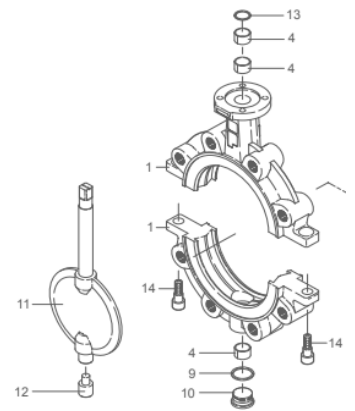
INDUSTRY



WATER

ITEM SECTION MATERIAL ADDITIONAL INFO / OPTIONS

ITEM	SECTION	MATERIAL	ADDITIONAL INFO / OPTIONS
1	Body	Nodular Cast Iron	EN-JS 1025
2	Seat	PTFE	M.-PTFE/ Cond.—PTFE
3	Elastomer Insert	Silicon	n/a
4	DU-bearing	Steel	PTFE coated
5	Trust collar	SS	n/a
6	Bellev. Spr. Washer	SS	n/a
7	O-Ring	FPM	n/a
8	Chevron seal	PTFE	n/a
9	Seal	SS	n/a
10	Plug screw DIN 908	SS	n/a
11	Disc/Shaft	SS/SS	SS/PTFE, SS/M.-PTFE, SS/Cond.-PTFE
12	Lower shaft stub	SS	n/a
13	Wiper ring	PTFE	n/a
14	Screw	SS	n/a



- PTFE-lined butterfly valve for chemically toxic and highly corrosive media
- Environmental protection via EBRO-Safety seal
- Split body design
- Isolation height according to plant prescription
- Can be disassembled, material-specific recycling possible
- Material conform to FDA to EG 1935/2004

Various materials and options available on the T214 range of butterfly valves, the above information is typically based on the standard stocked option which is Nodular Cast Iron body, stainless steel disc and PTFE liner.

VALVE MATERIALS

FEATURES

T +44 (0)1386 552369

E sales@allvalves.co.uk

W www.allvalves.co.uk

F +44 (0)1386 554227



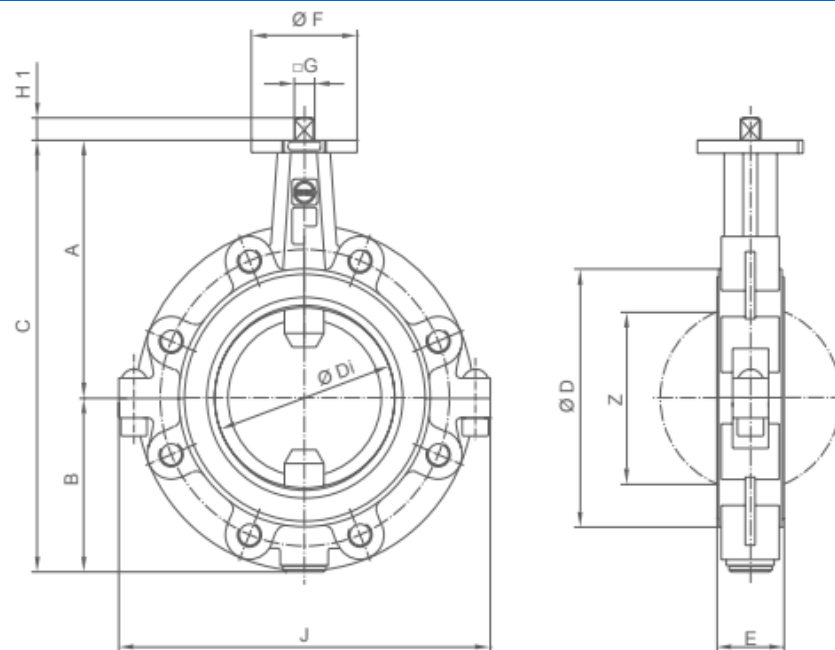


EBRO, A German manufacturer of the highest quality butterfly valves, a wide range of materials, sizes, liners and pressure ratings. EBRO butterfly valves are stocked typically 1" to 20" for next day delivery, manual or actuated.

SERIES: T214-A

ADDITIONAL VALVE MATERIALS & DIMENSIONS

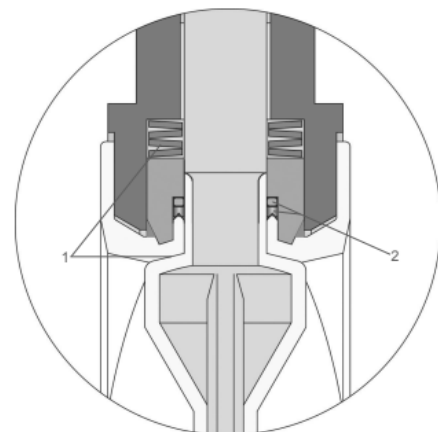
SIZE	A	B	C	D	E	F	Flange	G	H1	J	Z	KG
2	135	80	215	104	46	54	F04	11	12	160	41	3.8
2 1/2	150	82	232	104	46	54	F04	11	12	176	41	4.5
3	157	108	265	130	46	65	F05	14	16	230	66	6.2
4	180	118	298	160	52	65	F05	14	16	255	85	9.7
5	195	130	325	190	56	90	F07	14	16	290	112	12.0
6	210	142	352	210	56	90	F07	17	19	310	141	13.5
8	240	169	409	268	60	90	F07	17	19	390	187	22
10	245	217	492	324	68	125	F10	22	24	480	239	37
12	300	240	540	374	78	125	F10	22	24	550	283	55



T 214-A with bare shaft end acc. to EN ISO 5211

Safety seal at both shaft ends:

1. Primary sealing by means of a belleville spring washer, transmitting prestress on the spherical segment area.
2. Secondary sealing of the shaft by means of PTFE-Chevron and o-ring.



T +44 (0)1386 552369

E sales@allvalves.co.uk

W www.allvalves.co.uk

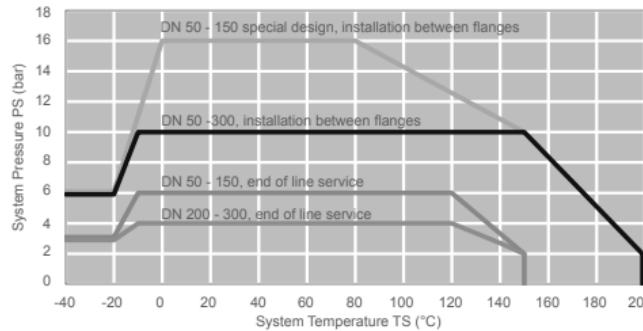
F +44 (0)1386 554227



SERIES: T214-A

TORQUE & Kv VALUES

REF	Size [in]	MD [Nm]
T214A-E09	2	40
T214A-E10	2 1/2	40
T214A-E11	3	70
T214A-E12	4	95
T214A-E13	5	130
T214A-E14	6	170
T214A-E16	8	230
T214A-E18	10	350
T214A-E20	12	480



TORQUE :

The torque values specified (Md) are based on dry media and are measured with air at a temperature of 20 °C

The values specified are based on the initial breakaway torque (disc disengages from seat, torque then drops)

Dynamic torque specification available upon request

REF	SIZE [in]	20 °	30 °	40 °	50 °	60 °	70 °	80 °	90 °
T214A-E09	2	4	2	11	28	53	84	121	161
T214A-E10	2 1/2	5	8	25	56	99	153	216	287
T214A-E11	3	13	12	30	69	131	216	328	467
T214A-E12	4	13	25	61	121	207	319	459	627
T214A-E13	5	37	66	122	216	353	543	793	1111
T214A-E14	6	50	94	171	303	509	810	1226	1778
T214A-E16	8	137	149	344	696	1178	1764	2426	3137
T214A-E18	10	178	291	562	1021	1699	2626	3832	5348
T214A-E20	12	395	378	820	1638	2751	4079	5538	7049

KV VALUES:

The Kv-value [m³ per hour] is the flow of water at a temperature of 5° C to 30°C (41°F to 86°F) at Δp of 1 bar

The Kv-values specified are based on tests carried out by the Delfter Hydraulics Laboratories, the Netherlands

Permissible velocity of flow Vmax 4,5 m/s for liquids, Vmax 70 m/s for gases

METAL DISC

REF	SIZE [in]	20 °	30 °	40 °	50 °	60 °	70 °	80 °	90 °
T214A-E09	2	2	1	4	12	22	35	50	67
T214A-E10	2 1/2	3	9	26	48	74	98	117	126
T214A-E11	3	4	14	38	71	108	143	171	186
T214A-E12	4	6	16	48	95	151	209	262	303
T214A-E13	5	12	40	110	217	356	525	718	933
T214A-E14	6	18	60	161	317	526	787	1096	1452
T214A-E16	8	125	176	395	756	1234	1807	2449	3136
T214A-E18	10	138	333	644	1103	1744	2599	3702	5086
T214A-E20	12	203	462	872	1479	2329	3471	4950	6814

The throttle function is linear at an angle 30° to 70°

Avoid cavitation

For further values, please contact our engineers

PTFE DISC