

Main Features:-

- ◆ Flanged PN16
- ◆ Cast Iron Body & Swing
- ◆ EPDM Seat
- ◆ Rated PN16
- ◆ Temperature -10°C to 120°C

*Temperature and pressure determined by valve body, seat etc.



SERIES: 30097

MANUFACTURER: **AVOL**
INDUSTRIAL VALVES

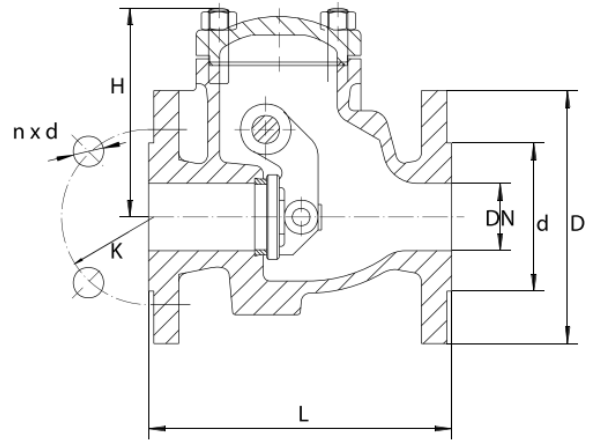
Suitable Applications & Approvals:



Name

Materials

Body	EN-GJL-250
Cover	EN-GJL-250
Hinge	EN-GJS-500-7
Flap	EN-GJS-500-7
Pin Bearing	8" - 12" Brass
Flap Pin	X20Cr13
Pin	X20Cr13
Cover Gasket	Graphite CrNi
Bolt	8.8 A2A
Plug	1 1/2" - 6" 10S20 Zinc Galvanized
Plug Gasket	8" - 12" EN-GJL-250
Plug Gasket	Carbonide Rubber
Washer	Carbon Steel A2A
Split Pin	X5CrNi18-10
Disc Gasket	EPDM



VALVE DIMENSIONS

DN	L	D	d	K	n x d	H	Kg
40	180	150	84	110	4x19	119	9
50	200	165	99	125	4x19	120	11
65	240	185	118	145	4x19	141	15.2
80	260	200	132	160	8x19	168	20.8
100	300	220	156	180	8x19	175	31.5
125	350	250	184	210	8x19	199	46
150	400	285	211	240	8x23	217	60
200	500	340	266	295	12x23	277	120
250	600	405	319	355	12x28	337	180
300	700	460	370	410	12x28	850	250

ALL VALVES ONLINE

Offering a full range of actuated valve packages, manual valve range, pipe fittings and pumps, we have a product for all your requirements. As an ISO 9001-2015 Quality Approved and certified company, All Valves offer a quality service from pre-sale to post sale. Shipping millions of pounds in value of manual valve and actuated valve packages all over the world since its formation, All Valves are a trusted valve and actuator supplier to many companies all over the world. Working with the leading brands in most industries.

T +44 (0)1386 552369

W www.allvalves.co.uk

E sales@allvalves.co.uk

F +44 (0)1386 554227