



Main Features:-

- ◆ Lugged Butterfly Valve EPDM WRAS Liner
- ◆ Suits PN10 / PN16 Flanges
- ◆ ISO Mount 5211 for Direct Mount Actuation
- ◆ 1" to 24" Available on Quick Delivery*
- ◆ -10 to + 130C Temperature Rating PN16**

*See available sizes for different liner materials.

**Temperature and pressure determined by valve body, seat etc.



Suitable Applications & Approvals:



2007 2011 2013

NBR PTFE FKM

SERIES: 20005

MANUFACTURER:

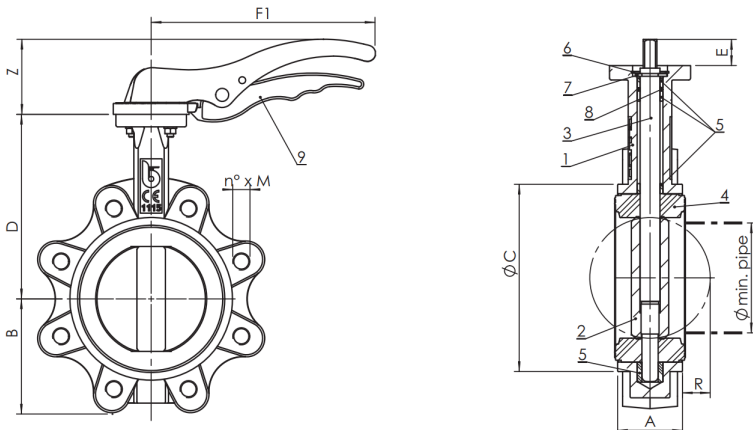


SIZE	CODE	A	C	D	B	ISO	S	G	J	Nm		KG	
										10BAR	16BAR	2005/2007/2013	2011
1"	20005-06	33	65	104	51	F05	7	65	50	3.3	16	2.6	-
1 1/4"	20005-06	33	73	110	56	F05	7	65	50	5.4	3.4	2.6	-
1 1/2"	20005-08	33	82	116	63	F05	9	65	50	8.8	9.2	2.3	1.8
2"	20005-09	43	89	126	62	F05	9	65	50	13.0	13.0	3.2	2.1
2 1/2"	20005-10	46	102	136	69	F05	9	65	50	20.0	21.0	4.1	2.4
3"	20005-11	46	118	150	90	F05	11	65	50	26.0	28.0	5.4	3.2
4"	20005-12	52	150	170	106	F05	11	65	50	40.0	44.0	6.7	4.3
5"	20005-13	56	174	180	119	F07	14	90	70	61.0	68.0	9.6	6.3
6"	20005-14	56	205	200	131	F07	14	90	70	88.0	99.0	10.8	7.8
8"	20005-16	60	260	230	166	F10	17	125	102	148.0	162.0	21.1	22.3
10"	20005-18	68	318	266	202	F12	27	150	125	234.0	257.0	32.7	32.8
12"	20005-20	78	376	292	235	F12	27	150	125	342.0	367.0	50.5	42.0
14"	20005-22	78	406	335	257	F12	27	150	125	396.0	550.0	79.3	-

* Up to 16" WRAS approved (Only EPDM), sales team can provide specification and dimensions for 16" to 24" on request. Nm includes no safety factor

VALVE DIMENSIONS

DIMENSIONAL DRAWING OF VALVE



MATERIALS OF CONSTRUCTION

BODY	DUCTILE IRON
DISC	CF8M SS
LINER	EPDM/NBR/PTFE/FKM
BUSHING	PTFE
ORINGS	VITON

Available Sizes

20005	20007	20011	20013
1" - 24"	1 1/2" - 24"	1 1/2" - 12"	1 1/2" - 24"

T +44 (0)1386 552369

E sales@allvalves.co.uk

W www.allvalves.co.uk

F +44 (0)1386 554227





What is WRAS? This is the approval required for valves to be used for applications where Potable (drinking) water is being processed/ used. This valve's WRAS certificate is available on request.

SERIES: 20005

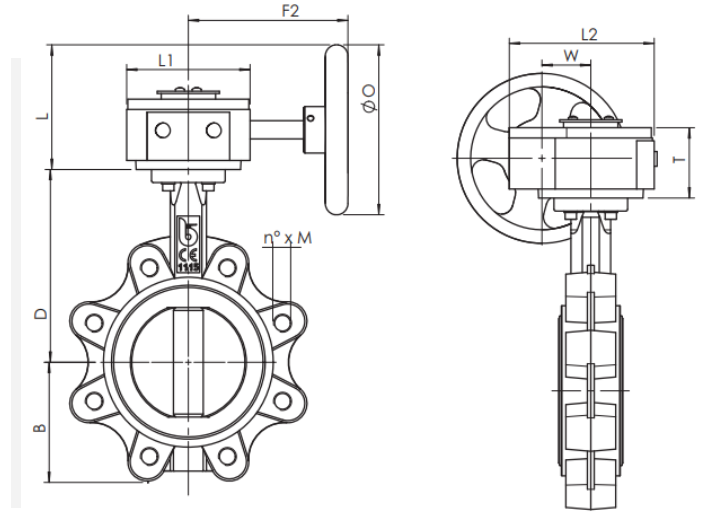
MANUFACTURER:



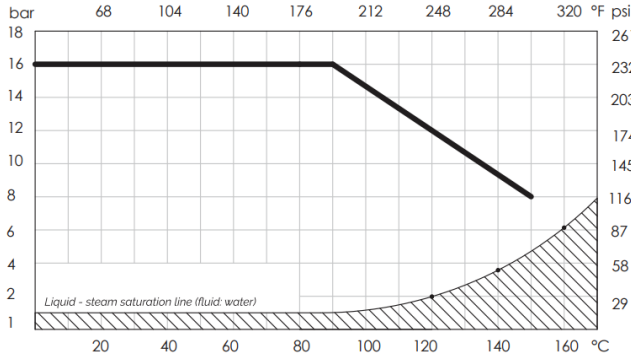
SIZE	CODE	L	T	L1	L2	W	R
12"	20005-20	190	80	170	195	81	112
14"	20005-22	183	80	151	188	80	128
16"	20005-24	183	80	151	188	80	144
18"	20005-26	183	80	151	188	80	163
20"	20005-28	311	125	214	275	168	182
24"	20005-32	386	136	262	324	293	219

Use different part numbers for different liner materials

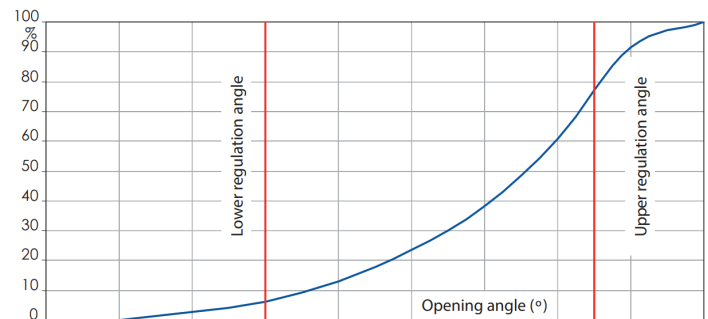
GEARBOX DIMENSIONS



PRESSURE & TEMP CHART



FLOW CHART - Kv RATES BE-



SIZE	CODE	10	20	30	40	50	60	70	80	90
11/2"	20005-08	0.04	2.1	4.8	10	19	30	48	73	79
2"	20005-09	0.05	2.6	6	13	23	38	60	91	99
2 1/2"	20005-10	0.09	3.8	14	33	53	75	98	108	108
3"	20005-11	0.17	7.8	16	34	60	100	158	237	261
4"	20005-12	0.26	15	31	67	120	199	314	471	518
5"	20005-13	0.43	25	53	115	205	339	535	803	883
6"	20005-14	0.69	39	82	177	316	522	827	1241	1364
8"	20005-16	2.6	52	142	250	450	713	1122	1723	2716
10"	20005-18	2.6	130	276	599	1068	1768	2798	4196	4611
12"	20005-20	3.5	202	427	926	1650	2730	4322	6483	7124

T +44 (0)1386 552369

W www.allvalves.co.uk

E sales@allvalves.co.uk

F +44 (0)1386 554227



What is WRAS? This is the approval required for valves to be used for applications where Potable (drinking) water is being processed/ used. This valve's WRAS certificate is available on request.

SERIES: 20005

MANUFACTURER:



Temperature				Pressure			
EPDM	NBR	PTFE	FKM	EPDM	NBR	PTFE	FKM
-10°C to 120°C	-10°C to 80°C	-10°C to 120°C	-10°C to 140°C	PN16 1" to 16"	PN16 1" to 16"	PN16	PN16 1" to 16"
				PN10 18" to 24"	PN10 18" to 24"		PN10 18" to 24"

Valves Options



SERIES 20007

NBR LINER



OIL



SERIES 20011

PTFE LINER

PRESSURE / TEMPERATURE



T +44 (0)1386 552369

E sales@allvalves.co.uk

W www.allvalves.co.uk

F +44 (0)1386 554227