



## Main Features:-

- ◆ Carbon Steel Body, SS Ball & Stem
- ◆ Carbon Graphite Filled PTFE Seats
- ◆ Firesafe to API607 4th Edition, Lever Op.
- ◆ Temperature -40°C to 200°C, Rated PN16
- ◆ 10143- PN16, 10144- ANSI 150

\*Temperature and pressure determined by valve body, seat etc.

## Suitable Applications & Approvals:



## 10143/10144

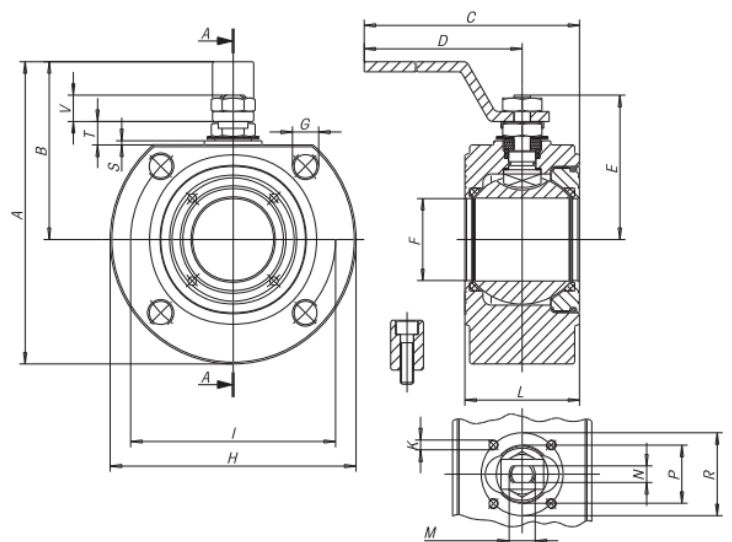
MANUFACTURER: **AVOL**  
INDUSTRIAL VALVES

SIZE	A	B	C	D	E	F	G	H	K	I	L	L ND		PN	Kg	Kv	Breakaway Torque			
												PN16/40	PN16/40				PN0	PN16	PN25	PN40
DN25	137	82	200	180	62.5	25	M12	110	M5	85	43	43	40	2.505	100	10	11.3	12	13	
DN32	150	85	205	180	67	32	M16	130	M5	100	54	54	40	3.995	130	16	19	20.5	22.5	
DN40	172	102	260	230	80	40	M16	150	M6	110	60	66	40	5.54	170	25	28	29.5	31.5	
DN50	185	110	265	230	87	50	M16	165	M6	125	70	83	40	7.3	280	35	39	41.5	44	
DN65	225	137.5	400	350	119.5	65	M16	175	M8	145	95	103	16	15	510	55	59	62.5	67	
DN80	245	150	410	350	129.5	78	M16	190	M8	160	122	122	40	19.5	770	75	84.5	92	99	
DN100	275	165	580	508	148.5	96	M16	220	M10	180	140	153	16	31.5	1200	150	168	180	195	

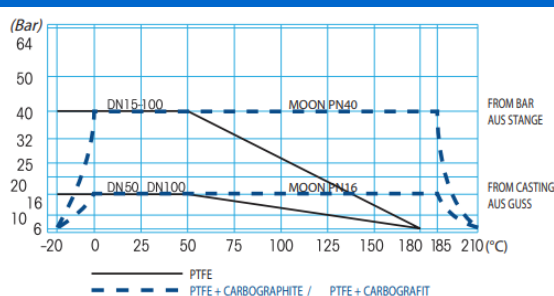
VALVE DIMENSIONS

## MATERIALS OF CONSTRUCTION

BODY	A105
BALL	AISI 316/AISI 304
BODY SEAT	PTFE
STEM	AISI 304
ORINGS	NBR
STEM ORING	Viton



## PRESSURE/TEMPERATURE CHART



T +44 (0)1386 552369

W www.allvalves.co.uk

E sales@allvalves.co.uk

F +44 (0)1386 554227

