



## Main Features:-

- ◆ 3pc Design Stainless Ball Valve
- ◆ Economy Ball Valve, PTFE seats and Seals
- ◆ -10C to +180C Temperature Rating PN63
- ◆ 10113—BSPP Ends
- ◆ 10114—Socket Weld Ends

\*Temperature and pressure determined by valve body, seat etc.

## Suitable Applications & Approvals:



## SERIES: 10113/10114

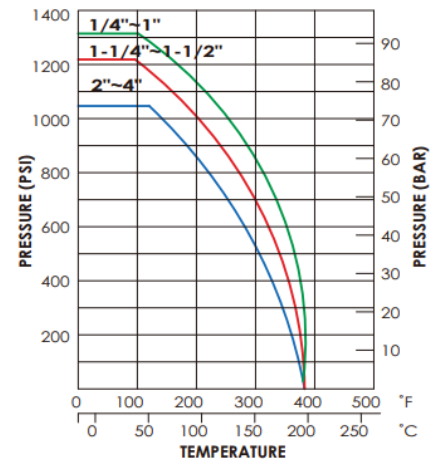
MANUFACTURER: **AVOL**  
INDUSTRIAL VALVES



VALVE DIMENSIONS

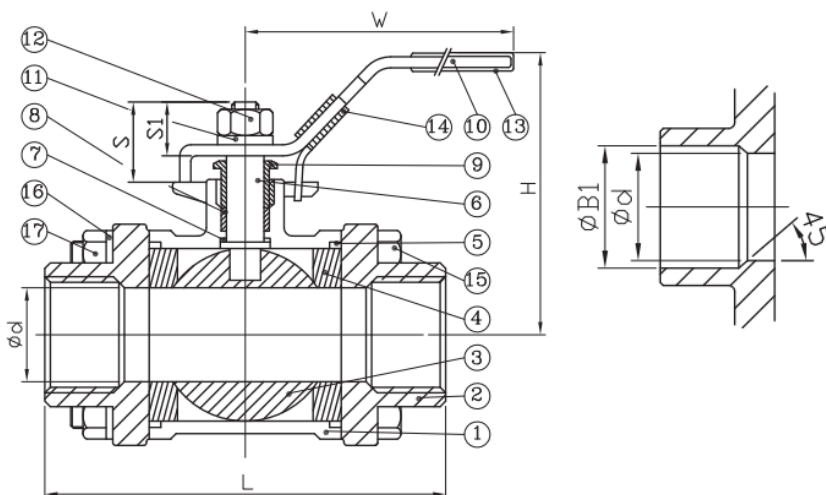
## PRESSURE & TEMP CHART

PRESSURE TEMPERATURE RATING



SIZE	CODE	d	L	H	W	S	CV	KG
1/4"	10113/10114-02	11.6	58	50	110	12.9	6.6	0.4
3/8"	10113/10114-03	12.8	58	50	110	12.9	6.6	0.4
1/2"	10113/10114-04	15.0	68.5	55	115	14.8	11.2	0.4
3/4"	10113/10114-05	20.0	84	60	135	22.4	21	0.7
1"	10113/10114-06	25.0	89	72	145	23.2	34	1.0
1 1/4"	10113/10114-07	32.0	112	78	145	23.6	57	1.6
1 1/2"	10113/10114-08	38.0	121	91	175	26.5	80	2.3
2"	10113/10114-09	50.0	146	105	175	25.6	150	3.3
2 1/2"	10113/10114-10	65.0	165	127	210	38.2	265	7.0
3"	10113/10114-11	80.0	183	137	210	33.8	415	11.7
4"	10113/10114-12	100	232	172	310	49.8	780	22.0

## DIMENSIONAL DRAWING OF VALVE



## MATERIALS OF CONSTRUCTION

BODY	SS ASTM A351
BALL	SS ASTM A351
BODY SEAT	PTFE
STEM	AISI 316 SS
ORINGS	PTFE
PRESSURE	PN63
TEMP	-10 to +180C

T +44 (0)1386 552369

W www.allvalves.co.uk

E sales@allvalves.co.uk

F +44 (0)1386 554227