



Main Features:-

- ◆ 2pc Design Stainless Ball Valve
- ◆ Male x Female Threaded Ends
- ◆ BSPP Full Bore, Anti Blow Out Stem
- ◆ PTFE seats and Seals
- ◆ -10C to +180C Temperature Rating PN63

*Temperature and pressure determined by valve body, seat etc.

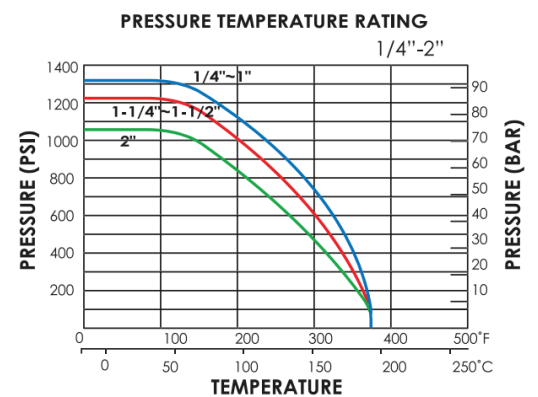
Suitable Applications & Approvals:



SERIES: 10109

MANUFACTURER: **AVOL**
INDUSTRIAL VALVES

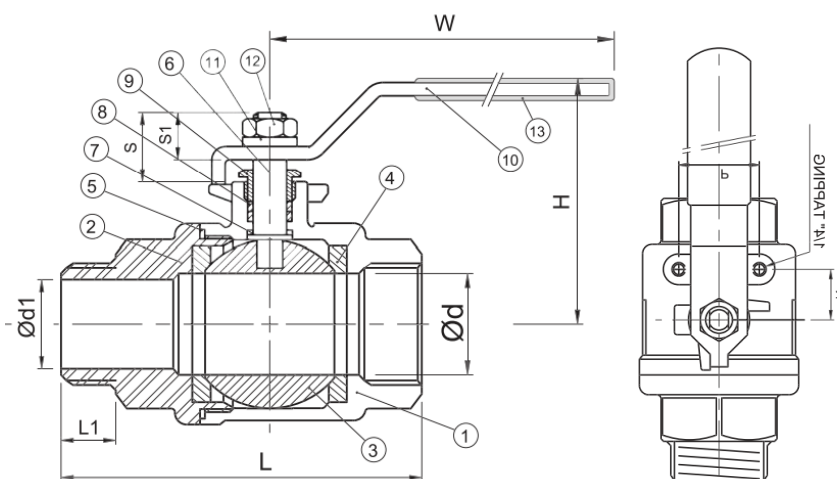
PRESSURE & TEMP CHART



SIZE	CODE	L	L1	H	W	S	S1	CV
1/4"	1036	58	12.6	51	99	16.5	10.2	6.6
3/8"	1036	59	13.2	51	102	16.5	10.2	7.9
1/2"	1036	68	16.7	53	102	16.5	10.2	11.2
3/4"	1036	78	18.2	59	122	20.0	13.5	21.0
1"	1036	99	21.0	73	157	23.5	16.0	35.0
1 1/4"	1036	112.4	23.5	78	135	23.5	16.0	57.0
1 1/2"	1036	114	23.5	91	191	25.5	17.0	80.0
2"	1036	151.7	27.8	99	165	25.5	17.0	148

VALVE DIMENSIONS

DIMENSIONAL DRAWING OF VALVE



MATERIALS OF CONSTRUCTION

BODY	SS ASTM A351
BALL	SS ASTM A351
BODY SEAT	PTFE
STEM	AISI 316 SS
ORINGS	PTFE
PRESSURE	PN63
TEMP	-10 to +180C

T +44 (0)1386 552369

W www.allvalves.co.uk

E sales@allvalves.co.uk

F +44 (0)1386 554227