



Main Features:-

- ◆ Semi Lugged DN50 to DN300
- ◆ Flanges PN10 or ANSI 150
- ◆ ATEX on Request
- ◆ EN 12266-1:2009 A RATING Leakage rate
- ◆ Available handwheel, lever or Actuated

*Temperature and pressure determined by valve body, seat etc.

Suitable Applications & Approvals:



HVAC



OIL



GAS



INDUSTRY



ATEX



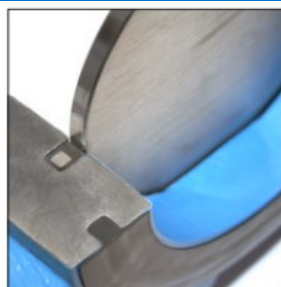
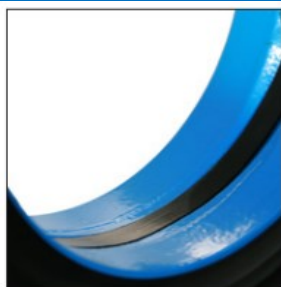
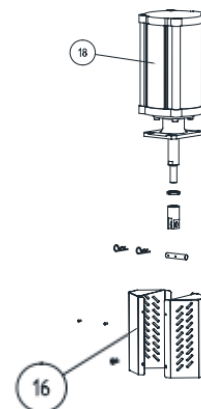
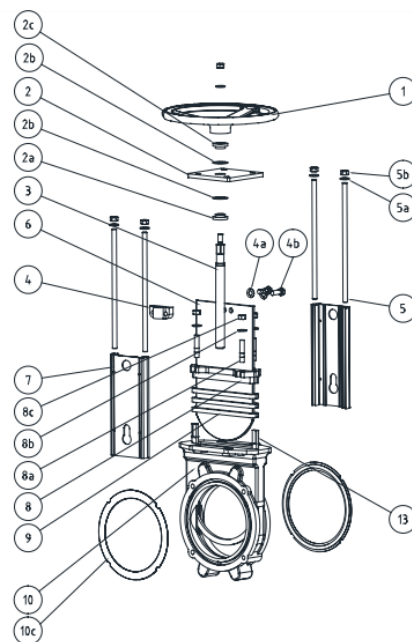
SERIES: WB11

MANUFACTURER: **Stafsjö** 
SINCE 1666

VALVE MATERIALS & DIMENSIONS

ITEM	PART	MATERIAL
1	Hand wheel	Coated cast iron
2	Yoke	Coated Steel (EN1.0038)
2a	Bearing	Brass
2b	Slide washer	POM
2c	Bearing	Brass
3	Stem	Stainless Steel
4	Stem Nut	Brass
5	Tie rod	Stainless Steel
6	Gate	See Equipment B
7	Beam	Aluminium
8	Gland	Coated carbon steel
9	Box Packing	See Equipment D
10	Valve Body	See Equipment A
11	Flange Sealing	Nitrile (NBR)
13	Sealing Profile	See Equipment C
13	Gate Guard	Coated Steel
14	Cylinder	See Datasheet

DIMENSIONAL DRAWINGS



Superior flow characteristics / Bi Directional Zero Leakage/ TwinPack sealing

T +44 (0)1386 552369

E sales@allvalves.co.uk

W www.allvalves.co.uk

F +44 (0)1386 554227

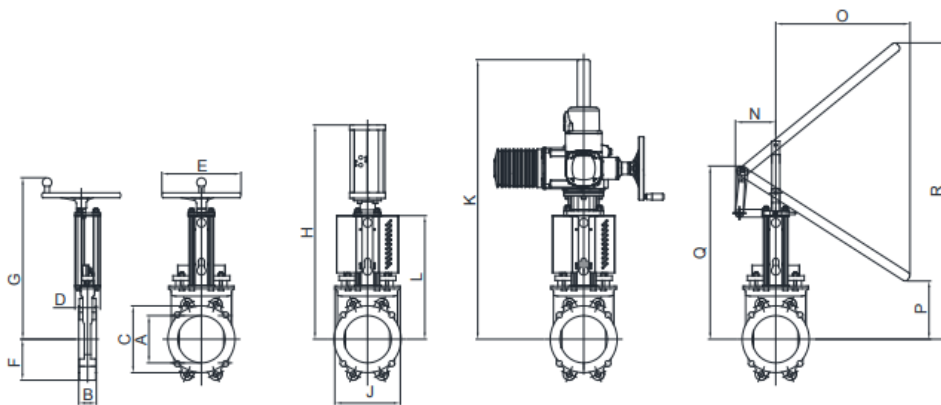


Stafsjo, a Swedish manufacturer of Knife Gate Valves offering the highest quality of manual and actuated knife gate valves for various applications, from DN50 to DN1200.

SERIES: WB11

DIMENSIONS

OPERATIONAL OPTIONS :



Stafsjo WB11 series are available as either manually operated or actuated via pneumatic cylinder or electric multi turn actuators.

WB11 is also available with lever operation up to DN150 for fast closing operation.

DN	A	B	C	D	E	F	G	H	J	K	L	KG
50	50	43	90	86	200	59	358	465	117	629	227	6.5
65	65	46	105	86	200	66	382	490	131	654	252	8.0
80	80	46	120	86	200	89	395	513	130	677	275	10.0
100	100	52	144	86	200	101	430	548	151	712	310	12.5
125	125	56	169	86	250	115	470	638	177	752	350	16.5
150	150	56	192	86	250	130	514	727	201	794	392	19.5
200	200	60	256	151	315	155	622	866	265	818	483	32.5
250	250	68	307	151	315	193	718	1050	335	914	579	48.5
300	300	78	354	151	315	228	822	1146	372	1059	675	66.0

APPLICATIONS?

Stafsjo Knife Gate Valves are suitable for a wide range of applications including:

- Pulp and Paper
- Mining and Minerals
- Waster and Waste Water
- Biomass/ Biogas
- Food / Beverage
- Powder

SIZE

50 65 80 100 125 150 200 250 300

APPROVALS?

Outside flange diameter	165	185	200	220	250	285	340	395	445
Bolt circle diameter	125	145	160	180	210	240	295	350	400
Number of throughgoing bolts	-	-	4	4	4	4	4	4	4
Number of tapped hole	4	4	4	4	4	4	4	8	8
Bolt size	M16	M16	M16	M16	M16	M20	M20	M20	M20
Screw heights	12	12	11	15	15	15	16	20	20

Stafsjo Knife Gate Valves have product and company approvals including

- ISO 9001-2015
- PED 2014/68/EU
- Machine Directive 2006/42
- On Request, ATEX 2014/34/EU II Category 3 G/D Zone 2 or 22 2 G/D Zone 1 or 21 or 1D Zone 20.
- Certificate for Cu Tr-010, CuTr-032.



Stafsjo, a Swedish manufacturer of Knife Gate Valves offering the highest quality of manual and actuated knife gate valves for various applications, from DN50 to DN1200.

SERIES: WB11

BASIC EQUIPMENT DATA

A - Valve Body

Material	Code	Type	Max Temp C
Nodular Iron	L	EN-JS1050 (GGG50)	200

B - Gate

Material	Type
Stainless Steel	EN 1.4301 (AISI 304)
Stainless Steel	EN 1.4404 (AISI 316)

C - Seat	Code	Max Temp C
EPDM	E	120
Nitrile	N	100

D - Box Packing	Code	Max Temp C
TwinPack	TY	260

MORE ABOUT WB11 :

Stafsjö's knife gate valve WB11 is bi-directional tight and has a cavity free full bore with superior flow characteristics. Integrated flange gaskets makes it easy to install. The valve is suitable for fluids, sludge and liquids with solids in suspensions such as water, waste water and bio mass.

ACTUATORS

Manual	Code	Automatic	Code
Hand wheel	HW	Pneumatic Cylinder	EC
Hand lever	HL	Electric Motor	EM
Chain wheel	CW	Hydraulic Cylinder	MH
Ratchet wrench	RW		
Bevel gear	BG		

FIRST CLASS SEALING :

A gland box supplied with three layers of our TwinPackTM, which is specially developed and made for Stafsjö's valves, secures that no media reaches the surrounding environment.

DOUBLE ACTING ACTUATOR

DN	EC Type	DN	Actuator
50-125	EC 100	50-150	SA 07.2
150	EC 125	200-250	SA 07.6
200-300	EC 160	300	SA 10.2

ELECTRIC MOTOR

ZERO LEAKAGE:

Bi-directional zero leakage shut-off The highly polished gate can easily cut through the media. Casted gate supports in the bore and a steel reinforced resilient perimeter seat provides a tight shut-off in both directions

WB11-L-200-E-TY-HW-PN10-1.4404

