



## Main Features:-

- ◆ Wall Connector
- ◆ Made of AISI 316 (Casting)
- ◆ BSP F-F (80423—NPT)
- ◆ Working Temperature -20 to + 220C \*
- ◆ Max. Working pressure 20 Bar

\*Temperature and pressure determined by valve body, seat etc.

## Suitable Applications & Approvals:



HVAC



OIL



GAS



INDUSTRY

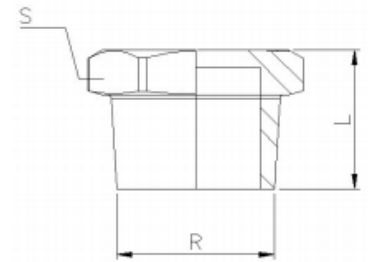


## SERIES: 80422

MANUFACTURER: **GENEBRE**

VALVE MATERIALS & DIMENSIONS

Ref	SIZE (R)	L	S
80422-02	1/4"	14.5	15
80422-03	3/8"	16	18
80422-04	1/2"	19.5	23
80422-05	3/4"	21	28
80422-06	1"	24	35
80422-07	1 1/4"	27	44
80422-08	1 1/2"	27	50
80422-09	2"	32	62
80422-10	2 1/2"	34	77
80422-11	3"	37.5	90



## ALLVALVES

Offering a full range of actuated valve packages, manual valve range, pipe fittings and pumps, we have a product for all your requirements. As an ISO 9001-2015 Quality Approved and certified company, All Valves offer a quality service from pre-sale to post sale. Shipping millions of pounds in value of manual valve and actuated valve packages all over the world since its formation, All Valves are a trusted valve and actuator supplier to many companies all over the world. Working with the leading brands in most industries.



T +44 (0)1386 552369

E sales@allvalves.co.uk

W www.allvalves.co.uk

F +44 (0)1386 554227