



Main Features:-

- ◆ Barrel Nipple M-M
- ◆ 1/4" to 4"
- ◆ Thread according to ISO 7-1
- ◆ Working Temperature -20 to + 220C *
- ◆ Max. Working pressure 20 Bar

*Temperature and pressure determined by valve body, seat etc.

Suitable Applications & Approvals:



HVAC



OIL



GAS



INDUSTRY

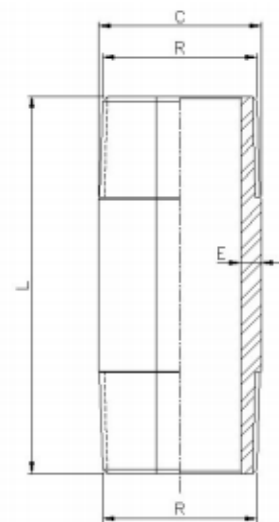


SERIES: 80410

MANUFACTURER: **GENEBRE**

VALVE MATERIALS & DIMENSIONS

Ref	SIZE (R)	C	E	L
80410-02	1/4"	13.7	2.24	40
80410-03	3/8"	17.1	2.31	40
80410-04	1/2"	21.3	2.77	60
80410-05	3/4"	26.7	2.87	60
80410-06	1"	33.4	3.38	60
80410-07	1 1/4"	42.2	3.56	80
80410-08	1 1/2"	48.3	3.68	80
80410-09	2"	60.3	3.91	100
80410-10	2 1/2"	76.1	5.16	100
80410-11	3"	88.9	5.49	120
80410-12	4"	114.3	6.02	150



ALLVALVES

Offering a full range of actuated valve packages, manual valve range, pipe fittings and pumps, we have a product for all your requirements. As an ISO 9001-2015 Quality Approved and certified company, All Valves offer a quality service from pre-sale to post sale. Shipping millions of pounds in value of manual valve and actuated valve packages all over the world since its formation, All Valves are a trusted valve and actuator supplier to many companies all over the world. Working with the leading brands in most industries.



T +44 (0)1386 552369

E sales@allvalves.co.uk

W www.allvalves.co.uk

F +44 (0)1386 554227